

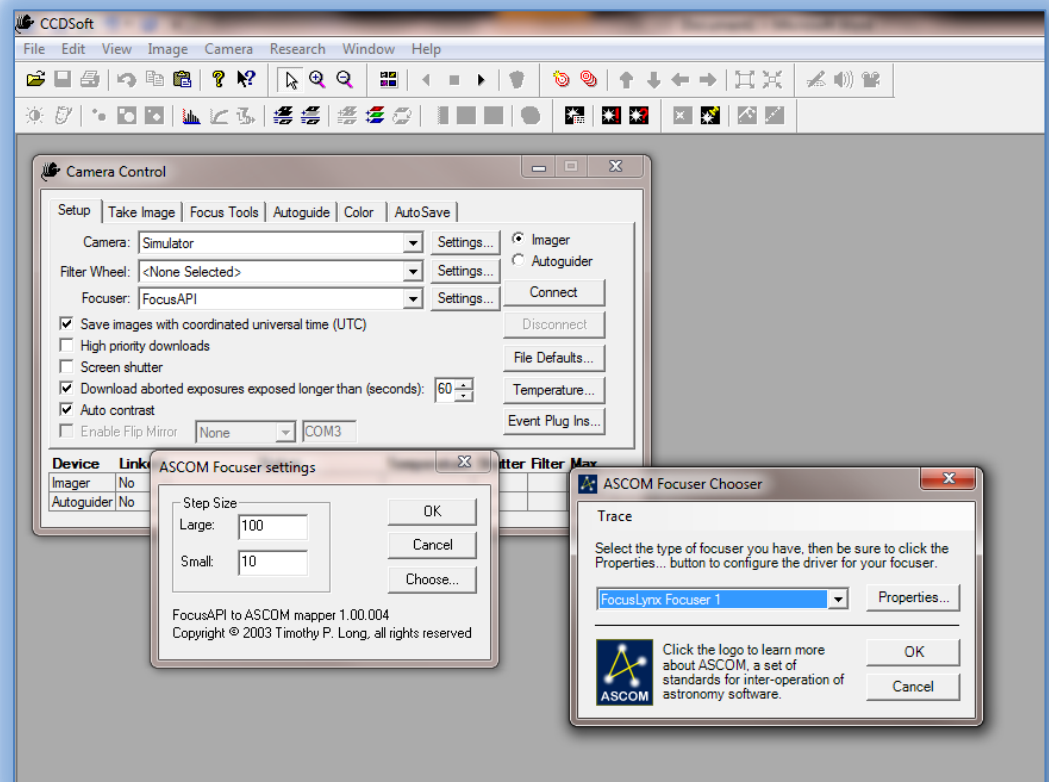
# Configuring FocusLynx / FocusBoss for use with CCDSoft

The FocusLynx / FocusBoss drivers take advantage of the ASCOM Local Server model and, as such, are dependent upon the ASCOM Platform. Any ASCOM compliant application will be able to communicate with the FocusLynx controller simply by using the Chooser to select either FocusLynx Focuser 1 or FocusLynx Focuser 2.

To use the FocusLynx controller with non-ASCOM programs such as CCDSoft, an ASCOM plug-in is required. To download the latest ASCOM platform, visit [www.ascom-standards.org](http://www.ascom-standards.org) and follow the download link to download and install the platform. Next, visit the Plug-In download page <http://ascom-standards.org/Downloads/Plugins.htm> and look for the *CCDSoft ASCOM Focuser (FocusAPI) Plug-In for CCDSoft* download link. Install the plug-in.

Open CCDSoft and the Camera Control window. For Focuser, click the pull-down and you should now see the *FocusAPI* option. Select this and click Settings. In the *ASCOM Focuser settings* dialog box, click Choose and select either *FocusLynx Focuser 1* or *FocusLynx Focuser 2* as shown below.

Click *Properties...* to make any necessary configuration changes to the FocusLynx configuration settings. Any changes made here will also affect the FocusLynx Commander application settings and vice-versa.



Contact technical support at [support@optecinc.com](mailto:support@optecinc.com) with any questions, comments or concerns.